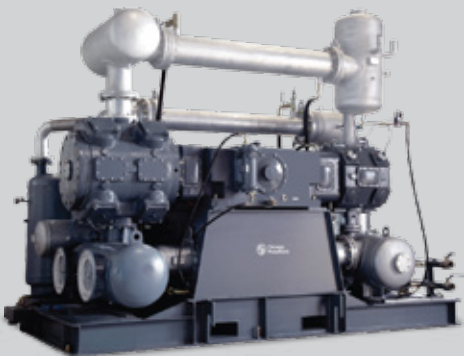
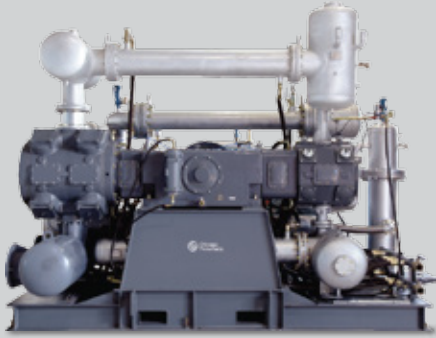


# PET Series

100 % Oil-free Air Compressors

100+  
1915 2015  
YEARS



People.  
Passion.  
Performance.

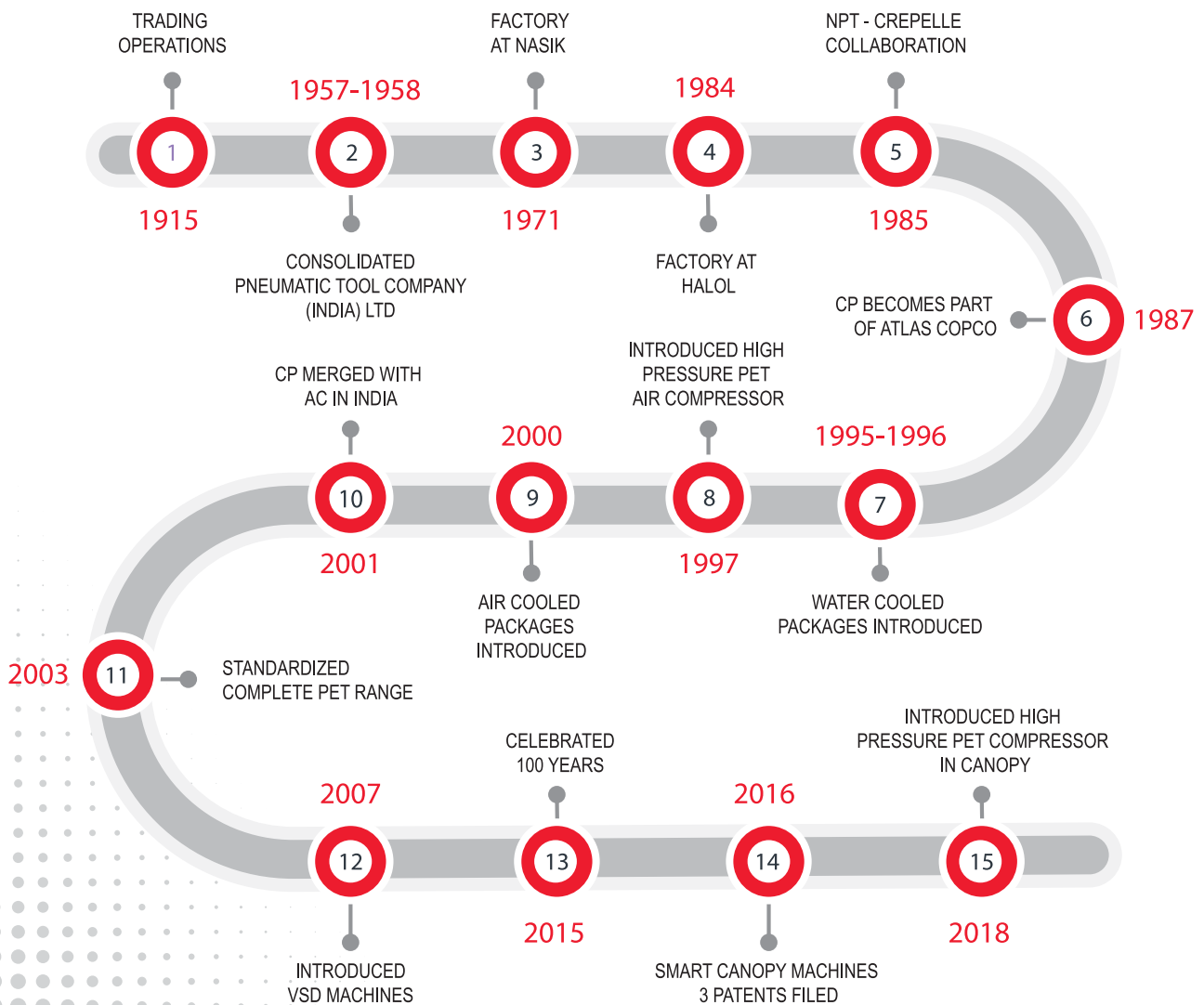


Chicago  
Pneumatic

# Chicago Pneumatic

## 100+ Years of Industrial Excellence in India

Established in 1901 in the United States, Chicago Pneumatic has been a global leader in the design, manufacture and distribution of high performance compressors. Today, Chicago Pneumatic is an international brand that offers quality products to meet every requirement across almost all industries. Driven by a passion to research, develop, manufacture and deliver products that meet your exact needs, we want our customers' businesses to excel, regardless of the industry. In addition to pioneering design, high impact technology and durability, Chicago Pneumatic means Customer Value. We as a brand have always emphasized the importance of local service in order to build a global reach. When it comes to meeting global quality standards, you really need not look any further.



## Your PET Partner

Compressed air is a vital resource in your PET blow moulding operation. An interruption in the air supply leads to loss in productivity, expensive delays and restarts. The smallest contamination from unwanted particles can corrupt product quality and affect performance of products.

Our technological expertise helps in round-the-clock operation and in maintaining right flow, pressure and quality of air. This empowers and supports you in achieving a sound bottom line for your business.

As a leader in compressed air technology, Chicago Pneumatic Compressors understand your needs and puts its experience of more than a century to work for your profitability. A professional organisation across the globe, Chicago Pneumatic ensures optimum productivity and reliability of your machines round-the-clock.



QUALITY



LESS  
DOWNTIME



ENERGY  
EFFICIENCY



SPARE PARTS  
(KITS)



INCREASED  
PRODUCTION



FLEXIBLE  
OPERATION



LOW COST



RELIABLE AND  
DURABLE





## A Few Industries We Cater To



Bottling Plants



Aviation Industry



Pharmaceutical Industry



Edible Oil Plants



Water Storage Plants



Cosmetic Industry

## Economical and Efficient Solutions For Maximum Productivity



At Chicago Pneumatic, we select components to ensure optimal quality and reliability.

Performance is guaranteed with reduction in footprint. As the undisputed market leader with thousands of units installed, Chicago Pneumatic has an unmatched quality which you can rely on for years on end.

## Introducing True Air Cooled PET Compressor

**PE75**  
196 CFM



**P03 to P10**  
55 - 196 CFM



**P19 to P27**  
300 - 720 CFM



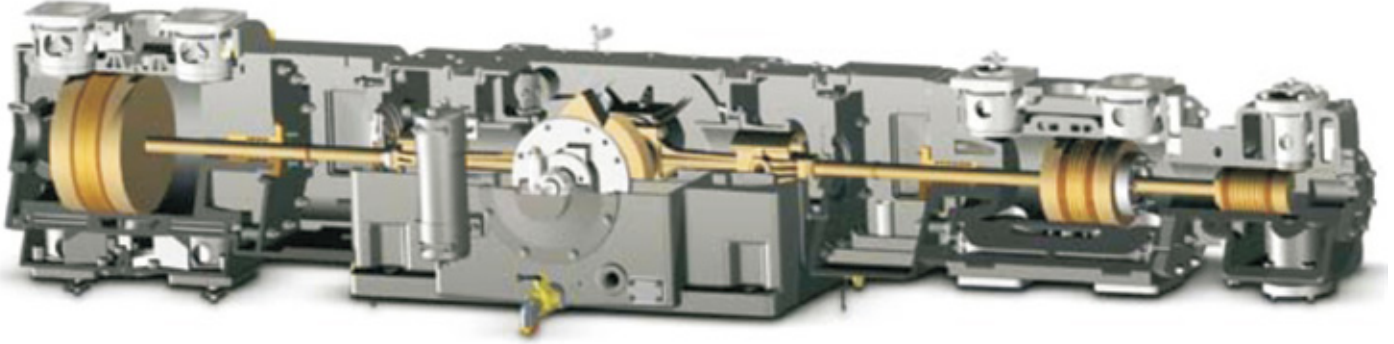
**P37**  
960 CFM



# Horizontal Balanced Opposed Design

Highly power efficient, low reciprocating masses with lower inertia loads and lesser friction.

Compact, Smaller footprint, Easy to install.

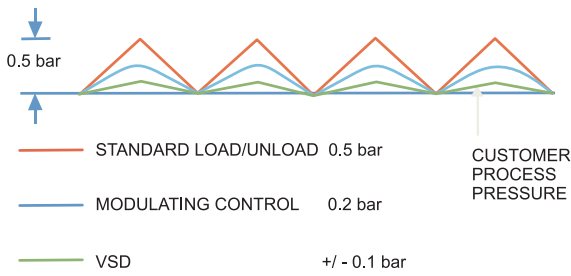


## Benefits

100% Oil-Free Air	Total Productivity - Round-the-clock Operation	Low Installation Cost
<ul style="list-style-type: none"><li>• Oil-free cylinders with PTFE piston rings and bearings for extended life</li></ul>	<ul style="list-style-type: none"><li>• Proven piston technology, robust 3 stage compression design</li></ul>	<ul style="list-style-type: none"><li>• Factory fitted air/water interconnection with control panel</li></ul>
<ul style="list-style-type: none"><li>• Extra long distance piece ensures separation of oil from compression chamber</li></ul>	<ul style="list-style-type: none"><li>• Inbuilt local control panel &amp; integrated VFD</li></ul>	<ul style="list-style-type: none"><li>• All components on common base plate</li></ul>
Low Maintenance Cost	Optimized Power with VFD	High Service Integrity
<ul style="list-style-type: none"><li>• Standardization of parts, easy &amp; faster availability</li></ul>	<ul style="list-style-type: none"><li>• Energy savings &amp; flexibility with ES 4000 controller</li></ul>	<ul style="list-style-type: none"><li>• Trained &amp; experienced resources close to customer</li></ul>
<ul style="list-style-type: none"><li>• Easy maintenance and easy access to every subpart</li></ul>	<ul style="list-style-type: none"><li>• Integrated factory fitted VFD</li></ul>	<ul style="list-style-type: none"><li>• High level of service integrity to optimize productivity of customer</li></ul>

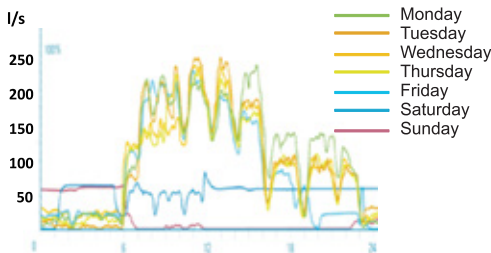
# IVR Panel

## Constant Outlet Pressure



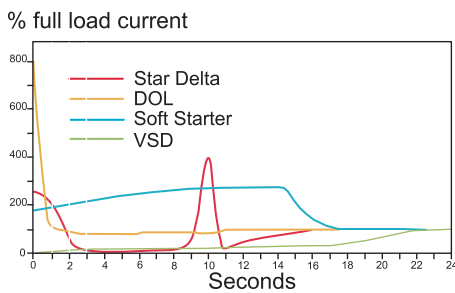
The output pressure is virtually constant over a wide capacity range (narrow pressure band within 0.1 bar) or if your power supply is not steady. This optimizes energy consumption and ensures high process stability when the air demand fluctuates.

## A High and Stable Power Factor



Regardless of the flow variation, the power factor remains constant at a high value (Cos Phi 0.99). This means that no additional investment needs to be made to correct the power factor and penalties from the utility company can be avoided.

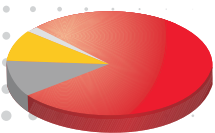
## Low Starting Current



With VSD technology, there is no current peak at start-up. The starting current is equal to the nominal current during the start-up phase. This eliminates the need to oversize your equipment to absorb peaks.

## Life Cycle Cost Comparison (LCC) Over a Period of 5 Years

### Standard Compressor



Installation: 2%  
 Maintenance: 9%  
 Investment: 12%  
 Energy Consumption: 77%

### Inverter Compressor



Installation: 2%  
 Maintenance: 9%  
 Investment: 17%  
 Energy Consumption: 50%  
 Savings: 22% (Over 5 years)

35% savings on energy consumption.



# Reliability

## CP Valves - Suited for Annual One Time Shutdown Maintenance



Specifically designed and adopted exclusively for CP compressors, they ensure uninterrupted operation and long service life. As a result, you only need an annual shutdown for maintenance. Manufactured on computerised SPMs, the perfect concentricity and flatness provides close tolerances and ensures an aerodynamic flow for low resistance. All of which means higher reliability, least valve losses & power savings.

## One Piece Bearing Suited for Near Lifetime Operation



Shrunk fit bearings ensure proper alignment & clearance thereby reducing wear and tear. They have very high load bearing capacity. Ideally suited for short stroke & higher speed piston compressors. Very high reliability & hardly needs replacement.

## Light Weight Pistons

Result in lesser inertia forces resulting in increased power savings.



## Cross-slide

Crossheads with wide guides to ensure perfect guiding.



## Anti-Vibration Mounts

Unique feature specially developed for CP Compressors, it eliminates the need for a concrete foundation and comes in a complete high duty package unit with a plug & play solution.



## Piston and Rider Rings

The ceramic filled teflon piston and rider rings are higher wear resistant and hence have longer life. The endless type construction for rider rings give it flexibility to rotate in 120 degrees increasing life by 200%.



## IE3 Motor

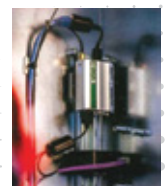
Now the machine is available with IE3 Premium efficiency motor as standard.



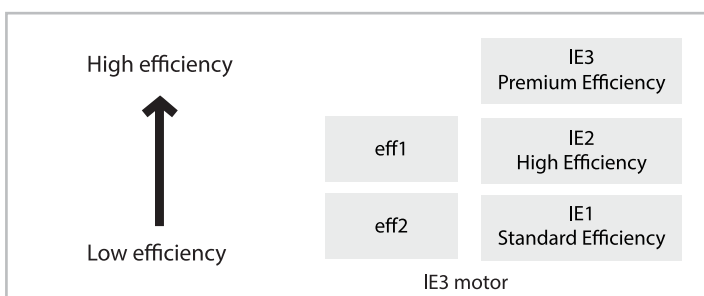
- Saves Power
- Reduced power consumption
- Less carbon footprint
- Lower electrical costs

## ICONS

Always be connected with ICONS that helps to optimize your compressed air consumption and saves on cost/ energy.

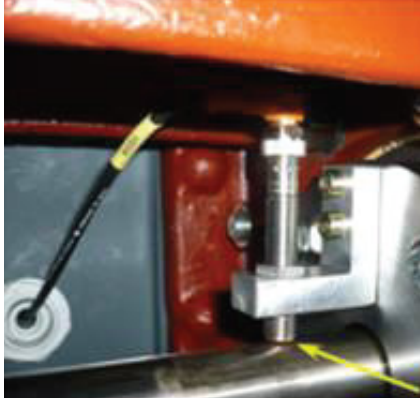


It offers complete insight of your compressed air network through a secure network. It protects your equipment by anticipating potential problems and warning you up front.





## Rod Drop Feature



### Features

- Checking of the distance between piston rod and sensor allowing predictive maintenance

### Benefits

- Rings wearing control
- Allows predictive maintenance
- Warning being reported via SmartLink service

### Advantages

- Lower downtime
- Change of wear components only when necessary
- Reduced risk of piston/cylinder touch

*\*Option available as standard in canopy version models only*

Longer life of wearing parts

Extended lifetime of piston rings

Powerful cooling and low operating temperatures

Efficient air flow arrangement

Reliable piston/rod connection

Higher overall reliability



## Control Panel

**Comprehensive monitoring through a PLC based interactive control panel which protects the compressor with built-in warning & shutdown functions.**

It helps to make maintenance management easier by giving prior indication of service requirements, and also to plan maintenance interventions in advance.

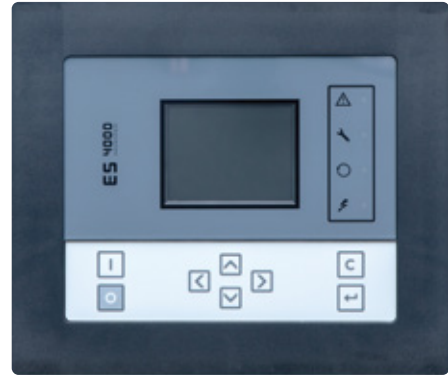
It also helps to assess the actual load on the compressor to optimize your compressor usage, thus enabling you to decide the right size of compressor for future expansion plans.



## Controller

### Total Monitoring and Supervision by ES 4000 Controller

- Energy Saving Compressor Management
- Fault History Enables Fast Diagnosis
- Full Integration With VSD
- Intelligent Protection
- Programmable Start and Stop Timer
- Warning and Maintenance Indications
- Multilingual Selection Program

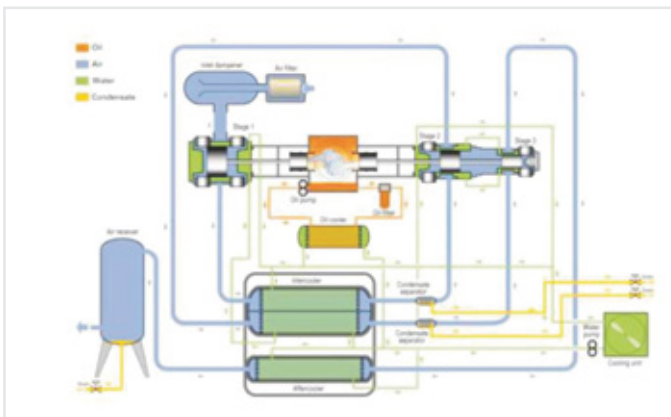


## Air Dryer and Receiver Assembly

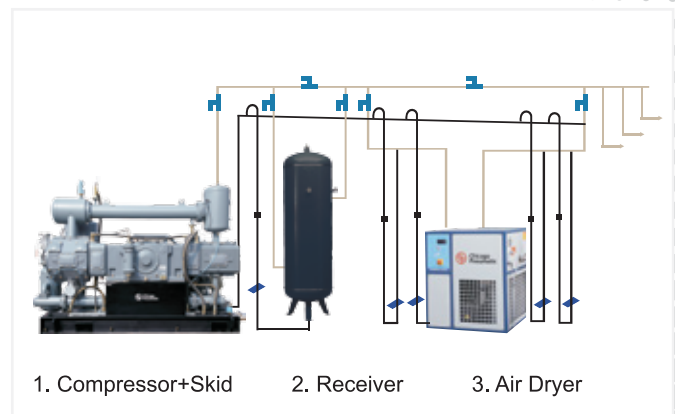
- High Pressure Refrigerated Dryer
- Pressure Dew Point of 3 Deg C
- Environment Friendly Refrigerant
- Designed for nominal pressure range of 25 to 42 Bar
- High Efficiency Micro Filter. Filtration up to 0.01 micron



## Air / Oil Circuit



## Typical Layout



# Integrated Compressed Air Solutions for PET Bottles



## Technical Data

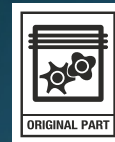
Chicago Pneumatic High Pressure Air Compressed systems are specifically designed to suit applications requiring OIL-FREE COMPRESSED AIR delivering capacities from 55 CFM to 960 CFM at discharge pressure range of 25 bar to 42 bar.

Model	Max working pressure		Capacity*			Installed motor power	
	BAR	PSI	L/S	M3/MIN	CFM	KW	HP
30P03-25	24 ~ 32	348 ~ 464	26	1.56	55	18	25
30P05-40	24 ~ 32	348 ~ 464	54	3.32	114	30	40
40P05-50	35 ~ 42	508 - 609	54	3.23	114	37	50
40P10-60	35 ~ 42	508 - 609	73	4.39	155	45	60
40P10-75	35 ~ 42	508 - 609	93	5.55	196	55	75
40P19-120	35 ~ 42	508 - 609	142	8.49	300	90	120
40P20-180	35 ~ 42	508 - 609	192	11.52	407	132	180
40P22-215	35 ~ 42	508 - 609	242	14.50	512	160	215
40P27-270	35 ~ 42	508 - 609	340	20.39	720	200	270
40P37-335	35 ~ 42	508 - 609	453	27.18	960	250	335

(\*) FAD and Power Tolerance as per BS -1571 latest edition \* The above performances are given at sea level.

## Service Integrity

Quality products ably supported by quality service!



At Chicago Pneumatic, it is our constant endeavour to provide you with the best equipment and service solutions. Our compressors are supported by a network of trained service and spare parts availability. We are available for any technical consultation to optimize the performance of your equipment and reliable operation. With a wide network spread across the country, we are never too far away to help you solve your problems, anytime, anywhere.

We value your feedback and continuously endeavour to improve our products and services.

**Original parts. Quality assurance.**



Since 1901, the Chicago Pneumatic name has represented reliability and attention to customer needs, with tools and compressors designed for specific industrial applications. Today, Chicago Pneumatic has a global reach, with local distributors around the world.

Our people start every single day with a passion to research, develop, manufacture and deliver new products that are meant to meet your needs not only today, but tomorrow as well.

To learn more, visit [www.cp.com](http://www.cp.com).

## Chicago Pneumatic: Full Offer, Global Presence



Vertical Machine



Oil-Free PET



Silenced Machine



Gas Compressor



Dryer

Chicago Pneumatic Compressors  
Sveanagar, Mumbai-Pune Highway, Dapodi,  
Pune - 411012, Maharashtra, India.



Design  
Manufacturing, Sales and  
Service of Air Compressors,  
Air Dryers and Air Filters



ISO 9001. ISO 14001  
OHSAS 18001  
Forms an integral part of each business  
process of Chicago Pneumatic Compressors

### Dealer Network

**100+**  
**Distributors**  
present across India

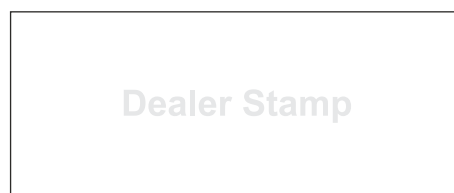
*Chicago Pneumatic compressors have a strong distribution network throughout India. Operating from almost every state ensures effective reach of products and services to end users across the country. Around 75% of these distributors have been associated with us for more than 15 years.*

*To find your nearest distributor please visit [www.cp.com](http://www.cp.com)*

### Regional Customer Centers

<b>West</b>	'Rushabh', 2nd Floor, Adjacent to Hotel 'Silverador Boutique', Manpada, Ghodbundar Road, Thane (W) - 400607, Maharashtra, India
<b>North</b>	Unitech Business Park, Tower - A, First Floor, Block - F, Sector - 41, South City - I, Gurgaon - 122001 (Haryana), India
<b>East</b>	Merlin Acropolis, 14th Floor, Office Unit No. 15/3, 1858/1 Rajdanga Main Road, Kolkata, West Bengal 700107, India
<b>Central</b>	404, Fourth Floor Amsri Shamira, Old Lancer Lines, Secunderabad 500025, India
<b>South</b>	No.1-A, 5th Floor, Kushal Garden, Systems Compound, Peenya Industrial Area, 2nd Phase, Bengaluru 560058, India

Area offices: Ahmedabad, Baroda, Chandigarh, Chennai, Pune  
Resident offices: Coimbatore, Erode, Kochi, Jaipur, Raipur, Vizag



**Toll Free No.: 1800 120 110040 | Email : [customer.care@cp.com](mailto:customer.care@cp.com)**

© 2010, Chicago Pneumatic. All rights reserved. All mentioned, product names, company names, trademarks and service marks are the properties of their respective owners. Our products are constantly being developed and improved. We thus reserve the right to modify product specifications without prior notice.