



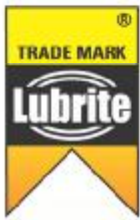
Centralised Lubrication Systems

*Right Way to
Lubrication*



AN ISO 9001 : 2000 COMPANY





The System :

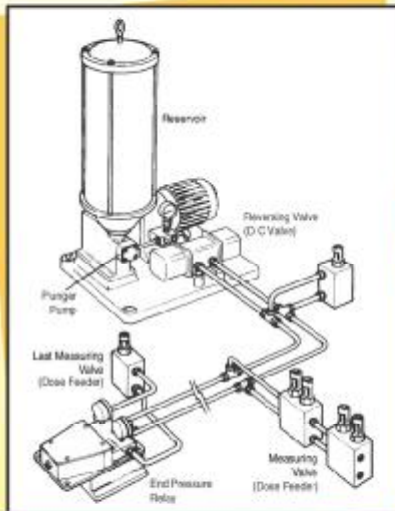
LUBRITE DUAL LINE System is designed to provide a positive means of dispensing lubricant to the bearings on a machine from a Central Pumping Source. The versatile rugged equipment offers flexibility in design and economy in operation.

Automatic Dual Line Lubrication Pump

LUBRITE DUAL LINE PUMP consists of Reciprocating Motor Driven Plunger Pump with inbuilt Gearbox. The Pump incorporate a large Reservoir with Follower Plate and Tell Tale Rod. Limit Switch is provided on the top of Reservoir to indicate full and empty level of lubricant. On the Pump outlet, Check Valve, Pressure Relief Valve, Bleed Valve, Inline Filters are provided and it is Connected to Direction Control Valve (Reversing Valve). The DC Valve gets signal from Pressure Switches (End Pressure Relay) mounted on each line. The whole system is controlled with Electric Control Panel.

Control Panel The Features of Electric Control Panel are :

- Main Supply Indication (440V Ac)
- Pump On & Off Indications and Switches
- Line 1 & Line 2 Separate Indications
- Selectable On - Off Timer
- Manual Mode (Continues Running) Auto Mode (Running Through Timer)
- Lubricant Level Indication



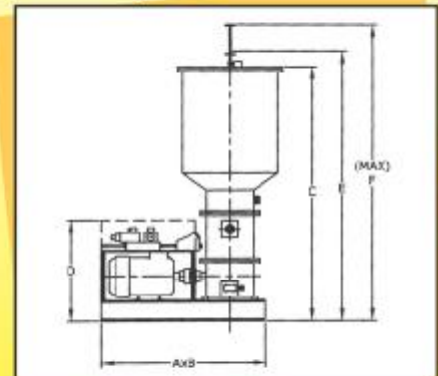
SPECIFICATIONS

MODEL	LDL 50	LDL 100	LDL 150
Reservoir Capacity	50KG	100KG	150KG
Discharge of Pump per Minute	125GM	250GM	500GM
Working Pressure	150kg/cm ²	250kg/cm ²	350kg/cm ²
Maximum Pressure	300kg/cm ²	350kg/cm ²	400kg/cm ²
Electric Motor 3ph, 1500rpm, 415V	1.5HP	2HP	3HP

Recommended Lubricant GREASE (NLGI 1 or 2) OIL (460 Servo) & Equivalent

DIMENSIONS IN mm

MODEL	LDL 50	LDL 100	LDL 150
A	695	695	775
B	445	445	505
C	950	1205	1550
D	280	280	280
E	1000	1255	1600
F	1450	1755	2300



Operations

A Central Pumping Station pushes lubricant through a Reversing Valve (Direction Control Valve) to either one of the supply lines. These lines run along the machine to feed Lubrite Dose Feeders (Measuring Valves) mounted on the machine at a convenient position to be seen and close to the points to be lubricated. The Dose Feeders are operated by Hydraulic pressure from the Pump delivering a metered quality (Dose) of lubricant to the bearing being served.

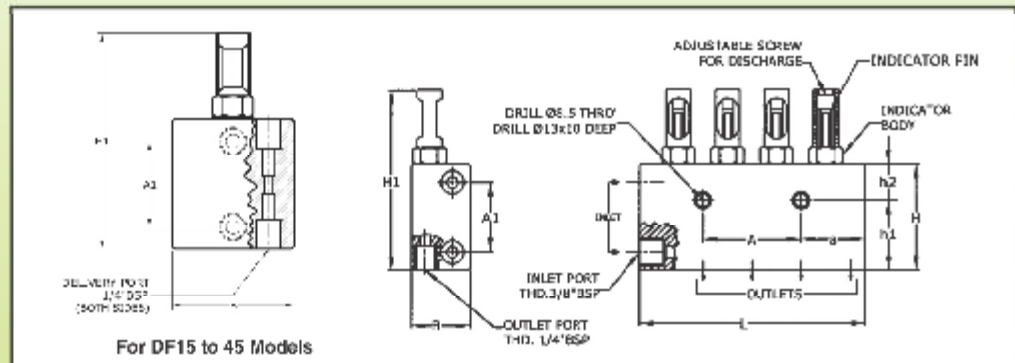
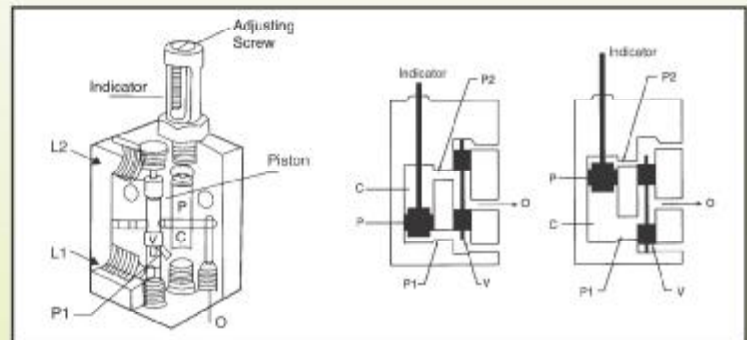


Dual Line Dose Feeders

Dose Feeders are the Dual Line adjustable Measuring Valve Blocks employed in the Centralised Two-Line Grease Lubrication Systems to deliver measured quantity of lubricant to the bearing points under preset pressure. These are mounted across the two lines and the outlets are connected to the bearing points by means of suitable pipe line.

Operations

Grease inlets are L1 and L2 and grease outlet is O. During one cycle, grease enters through L1 and subsequently pushes the shuttle valve V up, thereby opening port P1 via the under cut of the shuttle valve V. Grease now enters through port P1 into the bottom of chamber C and pushes piston P up. Consequently grease collected in the top of chamber C during the earlier cycle is pushed out by the piston P in its upward movement through port P2 via the under cut of shuttle valve V, horizontal cross bore and finally out of the Feeder through O. In the next cycle similarly grease enters through L2 pushes shuttle valve V down enters top of chamber C through port P2 pushes the piston P down, thereby driving out the grease collected in the bottom of chamber C during the first cycle through port P1 via shuttle valve under cut, horizontal cross bore and finally out through outlet O.



DIMENSIONS IN mm

MODEL	L	B	H	A	a	A1	H1	h1	h2	Discharge Per Stroke in (CC)	Weight in Kgs. (Approx.)	Mounting Bolts
DF11	46	36	65	-	14	43	110	43	22	0.5-2	0.900	M6x40
DF21	73	36	65	-	39	43	110	43	22	0.5-2	1.400	M8x40
DF31	108	36	65	30	39	43	110	43	22	0.5-2	1.900	M8x40
DF41	138	36	65	60	39	43	110	43	22	0.5-2	2.400	M8x40
DF12	55	45	80	-	10	52	139	50	30	1.5-5	1.500	M8x50
DF22	92	45	80	72	10	52	139	50	30	1.5-5	2.500	M8x50
DF32	130	45	80	110	10	52	139	50	30	1.5-5	3.500	M8x50
DF42	168	45	80	148	10	52	139	50	30	1.5-5	4.500	M8x50
DF13	92	45	80	72	10	52	139	50	30	3-10	2.500	M8x50
DF23	130	45	80	110	10	52	139	50	30	3-10	4.500	M8x50
DF14	168	45	80	148	10	52	139	50	30	12.5-25	4.500	M8x50
DF15	60	45	80	44	8	50	125	40	40	0.5-2	1.100	M8x60
DF25	80	45	80	64	8	50	125	40	40	0.5-2	2.000	M8x60
DF35	100	45	80	87	8	50	125	40	40	0.5-2	2.750	M8x60
DF45	125	45	80	109	8	50	125	40	40	0.5-2	3.500	M8x60

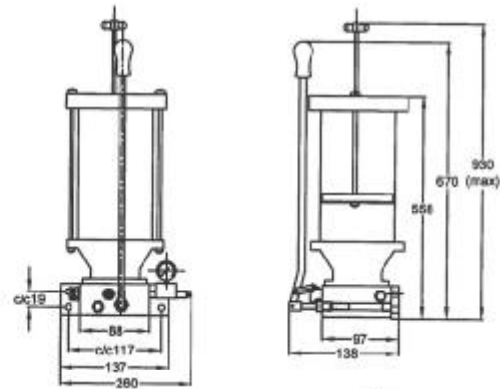


Manual Dual Line Grease Pump

This is Plunger Type Pump operated manually by a Lever (Handle). The Pump Housing has inbuilt spool type Manual Line Changer, which directs the grease alternately in the two outlets. The end of each greasing cycle is indicated by rise in pressure through Pressure Gauge.

The Pump is provided with Grease Reservoir, which has a Follower Plate and Tell Tale Rod to indicate the level of grease.

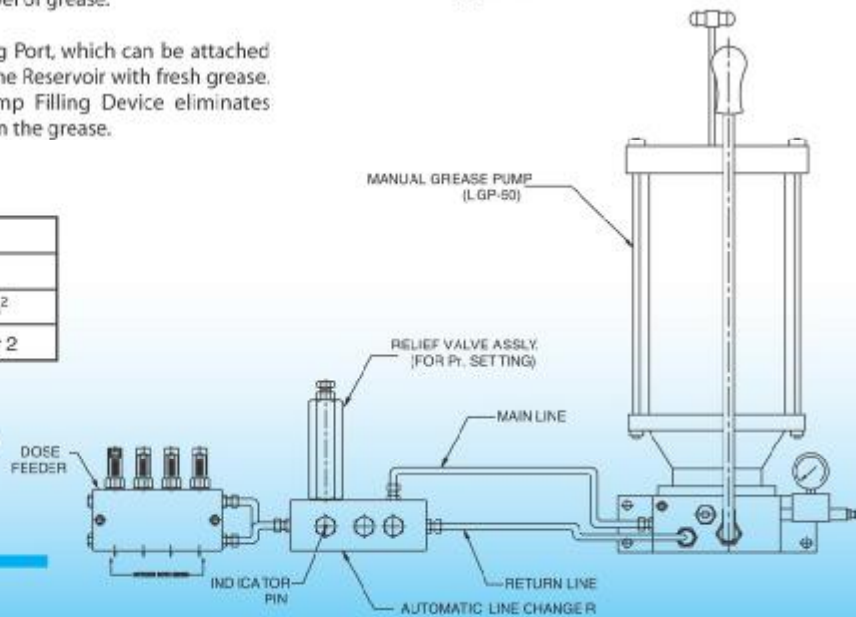
The Pump is also provided Grease Filling Port, which can be attached to a suitable Filling Pump, for charging the Reservoir with fresh grease. The Follower Plate together with Pump Filling Device eliminates possible formations of air pockets with in the grease.



Technical Specification

Reservoir Capacity	5Kg
Discharge per Stroke	10gm
Maximum Pressure	120kg/cm ²
Recommended Grease	NLGI 1 or 2

Manual Grease Pump With Automatic Line changer

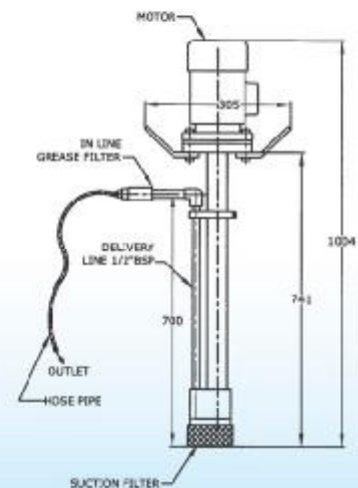


Motorised Grease Transfer Pump

LUBRITE Grease Filling Gear Pump is designed for transferring grease from a Barrel to the Reservoir of Centralised Grease Lubricating Station. The Pump, which is mounted at the bottom of a Long Barrel, is driven by a Flange Mounted Motor placed at the top. The inline Grease Filter is provided along with Hose for delivering grease.

Technical Specification

Delivery of Pump	200 kg/hour.
Working Pressure	15kg/sq.cm
Electric Motor	3ph. 1 HP, 1500 rpm



Product Applications

- Steel Plants • Paper Mills • Cement Plants • Coal Mines
- Forging Industries • Rolling Mills • Machine Tools Industries
- Rubber Processing Industries • Food Processing Industries
- Printing & Packing Industries & other Industries

- We also Manufacture as per Specifications Supplied by Customers on Request.

LUBRITE INDUSTRIES

Opp. B. N. Duggal Petrol Pump,
G.T. Road, PHAGWARA 144 401 (Pb.) India
Tele. : +91 1824 329988, Fax. : +91 1824 226438
Email : lubrite75@hotmail.com, info@lubriteindustries.com
Website : lubriteindustries.com